



Pabulum

Perth Waldorf School

14 Gwilliam Drive,

Bibra Lake WA 6163

Telephone: 9417 3638

Email: adminpws@pws.wa.edu.au

Website: www.pws.wa.edu.au

TERM 4 CALENDAR

DECEMBER

Thur 12 - Fri 13	High School Art Exhibition.
Mon 16	Christmas Picnic and Tableau - 5:30pm.
Tue 17	Kindergarten Crowning - 9:15am in the Hall (K6 Parents Invited).
Tue 17	LAST DAY OF TERM 4 (half day).

THIS WEEK

HIGH SCHOOL ART EXHIBITION

Thursday, 12th December and
Friday, 13th December
Details inside.

NEXT WEEK

CHRISTMAS TABLEAU AND PICNIC

Monday, 16th December
Details inside.

LAST DAY OF TERM 4

Tuesday, 17th December
(half day - finishing at 12:00pm).

SCHOOL HOLIDAYS

Our School Holidays commence on
Tuesday, 17th December, recommencing
School on
Tuesday, 4th February, 2020.

Please note that our Front Office will be
closed from **Monday, 23rd December** til
Monday, 6th January, 2020. We will also
be closed on the following days: **Wed
18th Dec and Mon, 16th, Mon 20th and
Mon 27th Jan (Public Holiday).**

Our office holiday hours are:
Mon-Fri, 9:00am-3:00pm.

**HAVE A MERRY CHRISTMAS AND
A HAPPY NEW YEAR**

Term 4, Week 9

Tuesday, 10th December, 2019

The Christmas Tableau and Picnic will be held next Monday night and is a very pleasant relaxed way to finish the school year. Details of the night are in this edition. The simple story from the Christian tradition of Jesus Christ's birth provides us with the theme of a gift given in love. As a family or for staff members it is a great way to wind down together and sing a few traditional carols on the grass in the evening air. Food is available via the P&F, see the attached order form. Please bring a blanket to sit on.

Staff Farewell There are many thank yous in this edition. Here is special acknowledgment of some staff that are leaving their formal role at the end of the year even though they may re-emerge in less formal roles:

- **Val Ashman** will finish with Class 6 and is not taking another class. Val has been with the school for many years. After completing a seven year cycle in 2013, Val returned in 2016 and has brought steadfastness, wisdom, care and love for the curriculum since Class 3. We are so grateful for her hard work and look forward to her wisdom and mentorship being available to primary teachers next year.
- Previously, we have mentioned **David Hammond** is leaving to explore the world after five years with the class. Thank you David. He will be missed (especially on afterschool games day!) and we wish him well.
- **Sean Mawdsley** has been an assistant in Class 6 this year and we appreciate his positive attitude and supportive nature. We wish him all the best as he departs at the end of this year.
- **Karen Peradon** has travelled with the Class 12 cohort as the Main lesson assistant teacher for a number of years and she has also been a specialist helper with art and sculpture among other things. Thank you Karen for your equanimity and smiley attitude as well as your hard work and love for the students. I am sure we will see you around as a parent and when the calling sparks your interest.
- As mentioned last week, **Cathy Dale** is leaving at the end of the year after eight years in the High School. Thank you Cathy and best wishes.
- **Ruth Kellenberger** has been our crosswalk attendant for a number of years now and has delighted passing traffic with her costumes and friendly wave. She has passed on the flags and we wish for her a well-deserved rest from that early morning vigil. Thank you Ruth.
- Earlier in the term **Tracey O'Neil** resigned from PWS and we wish her well after being a diligent and hardworking payroll officer and also managing fees, payment plans and all number of finance related tasks. Thank you Tracey and best wishes.
- **Grace Hahnel** has been working in the canteen for an extended period and is stepping away for other pursuits. We wish you well Grace and thanks for all your hard work and service.

Orchestra Tour Thank you to Paul, Peter Grayling and the Class seven teachers Kevin and Trish for all their work with the Orchestra tour to West Coast and Silver Tree Steiner Schools. How they managed to make music in such hot conditions is amazing.

(continued over the next page...)

STUDENT ABSENCES:

Please let the office know by 8:30am.
Text: 0429 680 969, Phone: 9417 3638, Email:
absence@pws.wa.edu.au.

PABULUM INFORMATION:

- *Pabulum* contributions need to be emailed to pabulum@pws.wa.edu.au by 2:15pm Thursdays.
- To view *Pabulum* as a PDF, go to www.pws.wa.edu.au
- To receive the link via email, please send a request to adminpws@pws.wa.edu.au

IN THE LIGHT OF A CHILD

*In shining majesty the mighty sun,
A king upon his chariot of gold,
Climbs higher till the heights of heaven are won
In glory streaming, blessed to behold.
And watching him, I feel a strange sense grow
That speaks of things that now I cannot see;
For only later will I truly know
How at his hour, God's Spirit of the Sun is touching me.*
Michael Hedley Burton

Farewell to Families Before we part, we send much love and best wishes to those families who are leaving the school at the end of the year. From Class 12 there are families who have been with the school for more than twenty years and throughout the school there are families, for a variety of reasons, will not be returning in 2020. We hope your journey here has been meaningful and we wish you all the best for the future.

Thanks Ashley A big shout out to Ashley Baker who publishes the Pabulum each week. It's a frustrating and complicated task done with grace and care. Thank you so much Ashley.

Thanks for looking after the kids! Don't forget to use this opportunity at Christmas to thank the people who show care and love for our children each day at school. We celebrate their energy and love!

May you and your family have a peaceful Christmas season and a specially lovely break away from the school over the holidays.

Bruce Lee
School Administrator

FROM FINANCE

The Finance Department would like to wish everyone at Perth Waldorf School a very happy holiday!

SCHOOL FEES ARE OVER DUE - Term 4 Due Date: Friday, 25th October, 2019.

CREDIT CARD/ONLINE PAYMENT	ELECTRONIC FUNDS TRANSFER	CHEQUE AND CASH
Payments by Credit Card can be made by visiting the Bpoint website: https://www.bpoint.com.au Biller Code: 147 2133 Reference: Family Code Phone payments can also be made by calling Reception on 9417 3638 during Office Hours. We accept VISA and MASTERCARD.	Payments by Electronic Funds Transfer (EFT) can be made to the school's banking details as follows: Account Name: Perth Waldorf School BSB: 066 000 Account Number: 1205 1015 Commonwealth Bank Perth Reference: Family Code	Payments by cheque can be made payable to Perth Waldorf School. Please have a copy of your statement attached when mailing your cheque. Postal Address: PO Box 1247, Bibra Lake WA 6965 Cheques and Cash Payments can also be made during office hours at the School Reception. EFTPOS terminal also available.

A late payment fee will apply to all accounts not paid by the due date. This does not apply if you have a payment plan arrangement in place.

UNREFERENCED PAYMENT

Our Finance Dept. has received an unknown payment for school fees with the following details:

24th October, 2019 - \$1855

If you think this transaction was made by you please contact the Finance Department on **9417 3638** or by emailing **account@pws.wa.edu.au**.

2020 SCHOOL FEES

School fee information for 2020 is now available on our website: **www.pws.wa.edu.au**.

GENERAL NEWS

2020 TERM DATES

Term 1: Tuesday, 4th February - Thursday, 9th April.

Term 2: Tuesday, 28th April - Friday, 26th June.

Term 3: Monday, 20th July - Thursday, 24th September.

Term 4: Monday, 12th October - Wednesday, 16th December.

PABULUM NOTICE

Dear PWS Community, please be aware that there will be no Pabulum edition next week (Tuesday, 17th December – last day of term). We apologise for any inconvenience this may cause.

Wishing everyone a very merry Christmas and we look forward to seeing you all in the new year!

EARLY CHILDHOOD AND PRIMARY REPORTS

All reports for Early Childhood and Primary School students will be available to be picked up at the Front Office from Monday, **16th December (from drop off time til 9:30am and from 2:00pm til 3:30pm)** and on Tuesday, **17th December (from drop-off time til 12:30pm)**. Any uncollected reports will be posted out in the school holidays.

Thank you.

PARENT PARTICIPATION SCHEME - DUE NEXT WEEK!

Parents, please be aware that all Family Participation Scheme forms for Semester Two are due back next week, **Tuesday, 17th December**. Once you have completed your form, please return it to reception or email it to adminpws@pws.wa.edu.au.

If you do not have a Family Participation Scheme form, there is one attached to the back of this *Pabulum*, or you can collect one from the Front Office. Thank you.

CLASS ONE AND KINDY NOTICE 2020

Dear Class One and all Kindy Parents,

This is a special notice that Class One and all Kindy classes will be half-days for the first two weeks of Term One. As in previous years, we trust that this will allow each child to come into their new routine with confidence, and will build their resilience in an appropriately kind manner.

CHRISTMAS CAROL NATIVITY PICNIC NEXT WEEK - Monday 16th December

We are very grateful to be able to present the Christmas Tableau for the School Community this year.

Our wish is to offer a gift for all - teachers, admin, canteen, grounds, maintenance, community support staff, class carers and parents (all the people in our community who are very responsible and often in charge!) – the chance to relax, reflect and hopefully enjoy this Christmas gift.

We would ask that children stay with their families and reverence and peace be the ambience of choice so that we can all carry the mood of Christmas home with us.

***FOOD UPDATE:** Pizza will be delivered to the Canteen on the day between 5:00pm and 5:15pm. If you would like a pizza delivered please fill out the order form attached to the back of this *Pabulum*, and return form to the Canteen. Icy poles will also be sold on the night to help fundraise for the Class 11 fundraiser.

5:30pm - bring a picnic to the Small Oval.

6:30pm - bring reverence - especially for children - and beautiful singing voices to the Carols and Christmas story!
After the Advent performance has finished can we please request that no children or adults enter the roped off area where the performance was held.

ADVENT MARKET PHOTOS

Last month our School held our annual Advent Markets. Thank you to everyone who attended, it was a beautiful day. Please enjoy the photos below and over the next page, taken of some of the stalls on the day!





POSITIONS VACANT

"At Perth Waldorf School we are committed to promoting the safety, health and wellbeing of children and young people and expect all school staff, parents, students, volunteers and visitors to the school to share that commitment"



Perth Waldorf School invites applications for...

FINANCE ASSISTANT

To commence ASAP.

Perth Waldorf School are seeking an energetic and eager individual to join the Finance Department. The position is offered at 0.8 to 1 FTE. The hours are 8.00am to 4.00pm including school holidays.

The ideal candidate will be responsible for a wide range of Finance duties including support to School Finance Coordinator, correspondence and general office duties as well as Reception cover at times.

Essential Criteria:

- Bookkeeping qualification.
- Payroll qualification and/or experience.
- Accuracy in data entry.
- A passion for numbers.
- Experience in accounts payable and receivable.
- Intermediate level knowledge of Microsoft Office particularly Word and Excel.
- Extreme flexibility and be a team player.
- Excellent communication skills - verbal and written.
- Be reliable and the willingness to learn.
- Positive confident attitude.
- Working with Children Check or a willingness to apply.

Desirable Criteria:

- Knowledge of school software (MAZE – Civica and SAGE Micropay).
- Possess a current C class driver's license.

For a job description, please view the school website: www.pws.wa.edu.au

Written applications including a covering letter and CV with three referees should be marked "Private and Confidential" and forwarded to: **Administrator, Perth Waldorf School, PO Box 1247 Bibra Lake WA 6965**

Or Email: employment@pws.wa.edu.au

Applications close: Monday, 16th December, 2019 at 12 noon.

Only successful applicants for interviews will be contacted.

High School Craft / Textiles Teacher

Part-time (approx. 0.45 FTE), to commence in Term 1, 2020.

We are seeking an enthusiastic teacher to join our wonderful team of teachers and commence with our High School students in 2020.

The successful applicant will have a passion for working with young adults as well as for handcrafts. The craft program is compulsory for students from Class 1 through to Class 9, with a textiles program being optional from Class 10 to Class 12. A willingness to engage with the Steiner pedagogy and philosophy is also required.

Applicants must be teachers who are registered (or eligible for registration) with the Teacher Registration Board and can meet West Australian child protection requirements.

Written applications, including a CV and three referees, should be marked 'Private and Confidential' and forwarded to:

The Administrator, Perth Waldorf School, PO Box 1247, BIBRA LAKE WA 6965, AUSTRALIA

Or Email: employment@pws.wa.edu.au

For a conversation about this position, please phone Annabelle Kellenberger at the school (+618) 9417 3638.

Applications close 12:00pm on Monday, 16th December, 2019

Crosswalk Attendant

1 year contract (with possibility of permanency)
Approx 7.10am - 8.40am, school days.
To commence February, 2020.

About the role:

- Great opportunity to work outdoors and give back to the community.
- Ensure the safety of children and pedestrians crossing the road and be the friendly face who kids remember and trust.
- Full training and uniform provided.

What you'll need to succeed:

- Good communication skills.
- Experience working with children OR the general public.
- Currently hold or be willing to obtain a Working With Children Check.
- Promote a welcoming and supportive culture and engage with the ethos and philosophy of our Steiner school.

How to apply:

Mail: Written applications, marked 'Private & Confidential' and forwarded to:
School Administrator, Perth Waldorf School, PO Box 1247, BIBRA LAKE WA 6965, AUSTRALIA

Email: employment@pws.wa.edu.au

Phone: Call Fay Davidson at the school on **08 9417 3638** to register your interest in the position.

Applications close Friday 20th December 2019

Connect Learning WA Before and After School Care

The service is available for children aged from 5-12

VACATION CARE - Connect Learning is now taking bookings
from Tuesday, 17th to Friday 20th December:

Tuesday - End of term celebration

Wednesday - Excursion to Bibra Lake Regional Playground

Thursday - All things Christmas

Friday - Rhythm Fix Incursion

Casual bookings are available all year round if you ever need last minute care. Feel free to pop in for a chat with Nicola (in the Extra Lesson Room before and after school).

Before School Care	6:30am to 8:25am
After School Care	2:00pm to 6:00pm
Vacation Care	6:30am to 6:00pm
Early Finish Thursdays	2:30pm to 6:00pm
Pupil Free Days	6:30am to 6:00pm

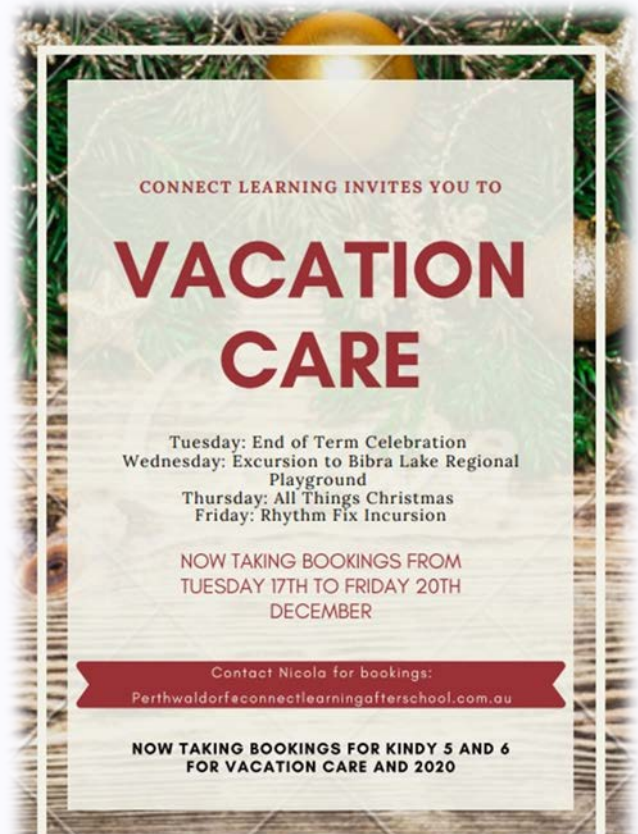
If you are interested in your child attending please contact Nicola.



NICOLA TODD
Coordinator

0420 667 904

Perthwaldorfaconnectlearningafterschool.com.au



FROM COMMUNITY SUPPORT



THANK YOU ONE AND ALL!



'Tis the season to be merry...and grateful towards all the wonderful people, whom together create such a welcoming and nurturing school environment for our children. The rich and developmentally focussed curriculum at Perth Waldorf School is supported by teachers and staff who come from diverse backgrounds, and work together to provide our children with a holistic education. They are dedicated to ensuring that our children's needs are met in preparing them for their journey into adult life – with an inward strength and the ability to think outside the square.

It must be acknowledged that there are often hurdles to overcome – we are human and life throws us challenges at times. However, there is always support available at our school when it is needed, and given with so much caring and compassion by parents and staff. This is what makes our school such a close-knit community.

The following thank yous come from a place of deep gratitude:

Thank you to our dedicated School Administrator, Bruce Lee. Your work is all-encompassing including liaising with parents, staff, College of Teachers and Council, Government agencies and so much more. We are grateful for your knowledge, diplomacy and the passion you employ in ensuring our school is run to the best possible standard.

Thank you to our Faculty Coordinators - Jennifer Byrne (Early Childhood), Lisa Payne (Primary School) and Annabelle Kellenberger and Mark Phillips (High School). You organise and oversee, liaise with parents, teachers and students, and ensure all runs smoothly. We are grateful for your calm and wise management.

Thank you to our wonderful, resourceful and professional teachers - Early Childhood, Primary and High School. There are too many of you to list but we know who you are! You inspire our children and kindle a love of learning, you meet them at their level and gently encourage them to venture outside their comfort zone, you provide them with the tools they need to make their mark in the wider community. We are truly grateful for your devotion and the wealth of knowledge that you bring to our school. Thank you also for your work outside the classroom - the preparation, marking, drama/music rehearsals, personal development, weekly College of Teachers meetings, and for holding the children so dearly in your hearts.

Thank you to our Special Needs Teachers, Specialist Teachers, Teacher Assistants, Relief Teachers, Tutors and Library Staff. You provide essential support for our teachers in and outside the classroom, needing to be flexible and adaptable in your role. We are grateful for your expertise and the rapport you develop with our children.

Thank you to our Pastoral Carers - Feonagh Cooke and Dean DioGuardi - for working with staff and high school students regarding their emotional and social issues. We are grateful for the much needed professional support you provide.

Thank you to the Administration and Finance teams. Thank you for the many vital tasks you perform in keeping our school running smoothly - finance, enrolments, reception, human resources, administration, building projects, faculty support and Pabulum publishing. We are grateful for your commitment and care in ensuring our school is well managed for families to enjoy the full benefits of Steiner education.

Thank you to the Maintenance and Grounds team. You look after our beautiful grounds, make repairs and manage building projects, set up for events, often working beyond regular hours. We are grateful for your expertise and hard work - the result is apparent to all who come to our beautiful school!

Thank you to Megan Harry and Canteen Assistants for providing our children, staff and parents with tasty, nutritious food every day. The canteen provides a social hub, bringing people together in the plaza. We are grateful to the love and commitment you put into feeding our community and for your flexibility in working during various events throughout the year.

Thank you to the Parents and Friends Association for managing the Canteen and Shop, and for raising the funds to support projects within our school. Everyone in the P&F is a volunteer, people who are passionate about supporting and improving our school for our children to benefit now and in the future. We are grateful for your selfless work and energy - particularly in organising Open Day and market days!

Thank you to the School Council members for their professionalism as a legal and governing body, also run by volunteers including staff and parents. We are grateful for your time and expertise in working together with Bruce Lee in managing these aspects of the school.

Thank you to our wonderful Leaders of Parent Groups and Classes - Anne Williams, Heidi Halter, Pixie Stott, Kristina Hamilton, Claire Williamson, Paul Lawrence, and Christian Geyer. The groups and classes they provide add to the building of a strong community within our school, bringing people together to learn and give back to the community. We are grateful for your time, expertise and love of sharing your knowledge with others.

Thank you to the families whom have contributed their time and energy throughout the year. Whether it is supporting your child's teacher, providing food for festivals, volunteering in some way, taking on the role of Class Carer, just to name a few things - it all adds up! We are grateful for your willing support and for the caring and nurturing environment that you provide at home for your child/children.

We wish you all a safe and joyful festive season and happy holidays!

Blessings from Penny, Renae, Jana, Simone and Lei.

FROM THE CANTEEN

The canteen would like to wish everyone a restful holiday and thank you all for your support over the year. We would love any donations of unwanted or excess kitchen ware especially forks, spoons and bowls to restock our depleted supply.

Thanks you,
Megan and the Canteen staff.

EARLY CHILDHOOD

FROM THE COORDINATOR

So much gratitude as the school year draws to a close!

Small and large acts of kindness have permeated life in the Early Childhood area this year. Community building is a doing kind of thing, and doing is what dominates the early years, so this becomes the foundation for our whole school.

Thank you all, community members, for your willingness to participate in the shared life of our school.



Advent at this time of school transitions is a real gift, because it shifts the focus from unsureness about the future to the essence of wonder and care. The children have been receptive to the repetitive action of the lighting of the candle for the first week, the light of stones, with shells bones and crystals brought to the Advent table. The plant world delights us this week. Continuing with the animal and the human may be followed up at home, as the Advent journey moves us to the joy of Christmas.

We wish you all - teachers, staff, parents, children, extended families - safe holidays, a happy Christmas and an optimistic new year.

Jennifer Byrne - Early Childhood Coordinator

PRIMARY SCHOOL

PRIMARY WOODWORK

Congratulations Classes 5, 6 and 7 Woodwork!!



It has been awesome to see everyone's projects come together over the last few weeks...a true testament to what is possible when you choose to step into something and fully engage your will!

(continued over the next page...)



I look forward to next year's woodwork classes with these amazing students. As for class 7, I will see you in the high school for your Outdoor Ed main lessons and camps.



(continued over the next page)



I would like to acknowledge all the hard work that Sean has put in as my assistant in woodwork this year. He has been an asset to our classes and a huge help to both myself and the students alike! Lastly, I would like to thank the Class 2 lyre making parents, who through their donations to use the workshop, have purchased a number of high quality Italian and Shinto rasps to be used by our students. Your generosity is greatly appreciated!

Paddy Hocking - Primary Woodwork Teacher

CLASS 7 ORCHESTRA TOUR

For most students it was the culmination of 4 years of playing an instrument and the chance to be proud of our collective achievements: last Friday our Class 7s toured their 50 piece orchestra to West Coast Steiner School and Silver Tree Steiner School. For the first time, we also combined forces with the choirs of these 2 schools and sang two beautiful songs together (at this point the performers outnumbered the audience!) It was a tough day weather wise - with temperatures over 40 degrees at both venues (our concert at Silver Tree was outside!), and transport wise - with buses breaking down in the heat, but our students pushed through, helping each other out and staying dedicated to playing amazing music together. What an adventure, what a day! Well done Class 7s! And thanks to the many staff members at 3 schools for helping to organise the day.



(continued over the next page...)



Paul Lawrence - Music Teacher



Concert Season

Perth Waldorf School invites everyone to attend the last of our end-of-year concerts:

Wednesday 11th December: Instrument Concerts - solos and small groups
10:00am Class 4; 11:15am Class 5; 12:00 noon Class 6; 1:30pm and 2:15pm Class 7.



PRIMARY CRAFT





HIGH SCHOOL



THIS WEEK

2019 High School Art Exhibition

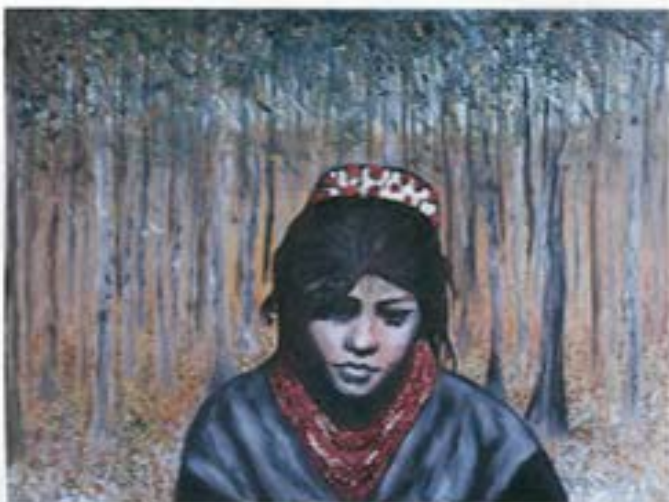
OFFICIAL OPENING 3:00PM

Thursday 12th December

2:30pm-6:00pm

Friday 13th December

8:30am-4:00pm



FEATURING CLASS 8-12

CREATIVE PIECES

This exhibition will include sculptures,
paintings, textiles, photographs,
drawings, prints, architectural models
and wood creations.

'THE CARRIAGE' SCHOOL SHOP

NEW CHRISTMAS STOCK AVAILABLE!

OPENING TIMES: Tuesday and Thursday from 8:15am-9:15am.

We stock all your school stationery supplies, uniforms and bags.

We also have a large range of craft supplies, jewellery, knitted items, cleaning products, salt lamps, essential oil holders, amber teething necklaces, wooden toys and books.

COMMUNITY CLASSES

Groups/Classes

Participating in any of these activities goes towards Family Participation Hours.

These groups for parents are run or led by teachers or parents. Members of the school community are encouraged to join any of the groups and enjoy the experience of personal growth and learning in this beautiful environment - a great inspiration for our children!

Mondays, 9:00am-10:15am	Parents and Friends Study Group with Anne Williams (in the Library, no children please) 0424 771 217 .
Mondays, 10:30am-12:00pm (fortnightly)	Biodynamic Group with Heidi Halter.
Tuesdays, 9:00am	Craft Group with Pixie Stott (outside the Canteen).
Wednesdays 9:00am	Adult Singing join Claire Williamson and discover your inner voice (in the Music Office)
Thursdays, 9:00am-9:45am	Listening Circle with Bruce Lee - the Administrator (in the Library). Come in for a conversation, concern, query or just to listen.
Saturdays, 1:00pm-4:00pm	Waldorf Wood Workers with Christian Geyer (meet in Plaza) 0409 267 178 .

EURYTHMY NOTICE

Dear parents and friends,

Unfortunately Tuesday Eurythmy classes with Kristina Hamilton have been cancelled for the rest of the term, due to Kristina being unwell. We apologise for any inconvenience this may cause.

We wish Kristina all the love and strength during this time and hope that she will be well again soon.

SCHOOL NOTICES

School notices are strictly for members of the school only and may consist of: lost and found items, items for sale (student/school related), and classes / lessons within the school, etc. Please try to restrict your notice to three lines (this is free of charge). School notices will appear in this section for two weeks. If you would like the ad to appear for longer, please contact the Pabulum on 9417 3638 each week. Thank you.

RENTAL NEEDED - Hi! My son is starting at PWS next year and we are looking for a 2 bedroom place to rent around South Fremantle or Bibra Lake. If you have any great ideas or possibilities to help us we would be sooo grateful! Please contact me on **0423 522 161** - Merry! Finn.

SEEKING HOUSE SITTING OPPORTUNITY - Responsible Steiner Family (Yallingup Steiner School) seek house sitting opportunity near PWS to bridge our move up while we wait for the next available Class 7 space (we will be home schooling in the meantime). For my 2 girls (12 and 17) and me. My daughter loves looking after all pets! Please contact Sharon (**0478 600 450**).

Rudolf Steiner College Perth

A Journey of Becoming

Dr. Lakshmi Prasanna and Patries Orange

Modules One, Two and Three
January 23rd-26th, 2020.

This course is for all those who are working as teachers, who are already part of a teacher training course, and anyone who is looking to deepen their understanding of anthroposophy through education.

The course includes:

- eurythmy to discover ourselves, each other and the child anew.
- nature observation, practicing our ability to observe the other and ourselves.
- working deeply in an explorative way with the first lecture of the lecture cycle 'Study of Man' to discover some of the treasures in this unique approach to education.
- conversation, artistic work.
- lectures at the end of our afternoon program bringing human physiology and embryology to help us understand the relationship between the development of the child and the curriculum Rudolf Steiner developed out of spiritual science.

The process relies on the individual and group work we develop between us.

*"Teacher Professional Development with Lakshmi and Patries is just extraordinary!
All our fires burn brightly after each Module." Amy Berridge*

For more information or to book contact Jenny Hill
jennyhill@inet.net.au / 0432 735 744

COMMUNITY NOTICES

Community Notices are for members of the school's community only and may consist of; business adverts, producers, services, items for sale (non-school related), etc. keeping in mind that they need to be consistent within our schools' ethos. Please try to restrict your notice to three lines (this is free of charge). All Community Notices will appear in this section for two weeks only. If you would like a ¼ page advert, a \$10 fee is required and will only appear in Week 2 and Week 8.

PASTEL WORKSHOP - Manifest your hearts's dreams' - a pre-Christmas, 4 hour pastel workshop with Dawn Meader designed to help you listen to your heart's dreams. More information at www.dawnmeader.com or call Catherine on **0412 921 196**. \$110 includes all art materials and home-baked morning tea. Mention PWS at time of booking.

HOUSE FOR SALE - Bibra Lake - 2.2kms from school. 4 bed, 2 bath, locked garage. Needs some TLC. \$390,000 - any offer considered. To view the property, please contact Catherine on **0412 921 196**.

SHARON D CLIFFORD STUDIOS - has 40% off original artworks and 30% off all remaining prints. Go to <https://sharondclifford.com.au/for-sale/> to browse current stock - the perfect special gift for yourself or someone you love. "I hope you find something you just can't live without!" Payment plans welcome, warmly Sharon **0447 267 450**.

RENTAL AVAILABLE - Christmas Holiday rental in Dunsborough (private home) available 18th-31st Dec, from \$600 p/w phone **0411 795 589** for my details.

SUMMER SERVINGS

Christmas

Christmas was originally the Roman midwinter festival and rebirth of light. Christians celebrate Christmas for the birth of Christ. Advent calendars, wreaths, angels, bells, candles and song create the magic in a time of giving thanks for the year that has gone and contemplating the new year we move into.



The first light of Advent
Is the light of Stones,
Stone that live in crystals and
Seashells and bones.

The second light of Advent
Is the light of Plants,
Plants that reach up to the sun
And in the breezes dance.

The third light of Advent
Is the light of Beasts,
The light of hope that we may see
In greatest and in least.

The fourth light of Advent
Is the light of man
The light of love, in the light of thought
To give and understand.

Christmas Tree Biscuits

These are spicy biscuits cut into shapes to hang on the tree. This recipe will give 24 biscuits.

50g soft brown sugar
50g margarine or butter
5 tblspns clear honey
225g plain flour
½ tsp mixed spice
¼ tsp cinnamon
¼ tsp nutmeg
½ tsp bicarb soda

1. Put the sugar, margarine and honey into a saucepan and heat until the fat has melted. Put aside to cool for a few minutes.
2. Add sieved flour and spices
3. Dissolve bicarb soda in 2 tsp of cold water and stir into the mixture.
4. Make the dough into a ball and knead for a minute. Wrap this in cling film and chill for about an hour. Set the oven to 375°F or 190°C.
5. Grease two or three baking trays.
6. Roll out the dough on a floured surface to 5mm thickness and cut out Christmas shapes, either with cutters or the point of a sharp knife.
7. Arrange the biscuits on the trays, make a hole at the top of each one with a skewer and decorate with chopped nuts, glace cherries or dried fruit.
8. Bake for 12- 15 minutes until golden. Transfer biscuits to a wire cooling rack.
9. When cold, thread length of cotton or ribbon through the holes and hang on tree.



Pizza Order Form – Christmas Tableau - Monday 16th December 2019

Orders Close Friday 13th at 1.30pm

All pizzas will be delivered between 5 & 5.15pm on Monday to the canteen. You will need to come and collect your order from there.

Order Name: _____

Contact Phone: _____

Pizza Costs: Standard Pizza 13" Classic Crust approx. 10 Slices - \$20.00

Standard Pizza 12" Gluten Free approx. 8 Slices - \$19.00

Gourmet Pizza 13" Classic Crust approx. 10 Slices - \$22.00

Gourmet Pizza 12" Gluten Free approx. 8 Slices - \$21.00

Please choose your pizza and then tick the base you want and quantity required:

Pizza Option	Classic Crust	Gluten Free
Vegan Greek – gourmet Olive Oil, Vegan Olia cheese, onion, capsicum, tomato, olives, garlic, oregano & Vegan feta		
Veggie Special – gourmet Egg mayo & tomato sauce mix, cheese, spinach, sliced mushrooms, artichokes, olives & feta		
Godfather – gourmet Hot godfather sauce, cheese, spinach, sliced tomato, onion, mushroom, chicken & feta		
Hawaiian – standard Tomato sauce, cheese, ham (FR) & pineapple		
Meat Lovers – standard BBQ sauce, cheese, ham (FR), pepperoni, beef & bacon (FR)		
Supreme – standard Tomato sauce, cheese, pineapple, capsicum, onion, ham (FR), mushroom, pepperoni, tomato, bacon (FR) & olives		
Mexican – standard Tomato sauce, cheese, onion, capsicum, ham (FR), pepperoni, tomato, jalapenos & chilli flakes		

Semester 1 Form – Due Friday 28th June

Semester 2 Form – Due Tuesday 17th December

Your name(s): _____ Date: _____

Family Account Name (See Invoice): _____ Name of Eldest Child: _____ Class: _____

Contact phone #: _____ Semester 1 / 2 (please circle) Email address: _____

Please return this form to the School Admin Office or email to: adminpws@pws.wa.edu.au by the due date.