



# Pabulum

Perth Waldorf School

14 Gwilliam Drive,

Bibra Lake WA 6163

Telephone: 9417 3638

Email: adminpws@pws.wa.edu.au

Website: www.pws.wa.edu.au

## TERM 2 CALENDAR

### JUNE

Thur 20	Primary and High School WINTER FESTIVAL
Fri 21	High School PUPIL FREE DAY
Tue 25	Class 10 Teacher Parent Meeting - 6:30pm
Tue 25	High School Pyjama Day
Fri 28	LAST DAY OF TERM 2

### THIS WEEK

Primary and High School  
WINTER FESTIVAL  
Thursday, 20<sup>th</sup> June



HIGH SCHOOL PUPIL FREE DAY  
Friday, 21<sup>st</sup> June

### PABULUM NOTICE

Dear PWS Community,

Please note that there will be no Pabulum edition next week (Tuesday, 25th June).

We apologise for any inconvenience this may cause.

Ashley Baker and Sarah Boyle -

### STUDENT ABSENCES:

\*Please let the office know by 8:30am.\*

Text: 0429 680 969, Phone: 9417 3638,

Email: absence@pws.wa.edu.au,

### PABULUM INFORMATION:

- Pabulum contributions need to be emailed to [pabulum@pws.wa.edu.au](mailto:pabulum@pws.wa.edu.au) by 2:15pm Thursdays.
- To view Pabulum as a PDF, go to [www.pws.wa.edu.au](http://www.pws.wa.edu.au)
- To receive the link via email, please send a request to [adminpws@pws.wa.edu.au](mailto:adminpws@pws.wa.edu.au)

## Term 2, Week 8

Tuesday, 18<sup>th</sup> June, 2019

### WINTER FESTIVAL

All this week, throughout the school we celebrate the Solstice with Festivals. Thank you to everyone involved in creating the mood in which we can revere.

*Deep in the ground of the human soul*

*Of victory assured*

*The Spirit-Sun is living*

*All through the winter of the inner life*

*The faithful heart divines it.*

### Positive Schools

Last week Perth Waldorf School was represented by holding a workshop at the Positive Schools Conference held in Fremantle. It was a special opportunity to provide a picture of what makes Steiner Education positive by educating children to become healthy, creative adults who can do the good of fostering a healthy society and empowering young people to see a future they can help create. The antithesis being jaded, cynical, disengaged young adults that have accepted their cog in the wheel status and do not actively participate in the evolution of consciousness.

The workshop discussed the work of Australian social researcher Hugh MacKay who re-imagines Australian society moving away from being an anxious society. His antidote aligns closely with Steiner education when he highlights the need to (1) foster the human spirit, (2) allow young people to flourish in a holistic learning environment towards (a) moral growth, (b) social consciousness and (c) citizenship.

Hugh MacKay talks of needing to have :

- a sense there is something greater than ourselves (even if it means AFL!)
- having a deep sense of community,
- having a deep connection with nature and
- having empathy and compassion at the core of what we do.

The Steiner Curriculum fosters these four strongly through the curriculum and the work we do with children and the twin pillars of individual and societal development are core to a healthy Steiner education. We seek to enable children to live well in a world worth living in.

### Take Care When Driving at School

The speed of vehicles coming down the track at the back of the school office is scary! People are feeling fearful especially staff and guests in the transportable buildings. Please slow down! A speed hump has now been placed along this track to help reduce speed. Please be mindful of the safety of our children and community and let's keep the speed to walking pace. Please remember that in all cases pedestrians have right of way when driving on school grounds. This includes High School students mellowing in the beauty of our environment. Let's be mellow.

### Staff News

It was with much regret that the school received news that Peggy Crane is leaving her role as School Development Coordinator. Peggy joined the school in 2017 and made a big impact leading her to be accountable for HR, School Registration, Building and Maintenance, Building projects, IT infrastructure, Front Office Management and anything else that needed attention! Peggy is leaving to tend to her family businesses which need her undivided attention but will remain a PWS parent into the future. We wish her well.

The school is currently advertising for an HR and Compliance Officer as we work to restructure the administration functions in the school. As always, our first priority is finding a good human with a high level of social and emotional intelligence. See inside for more details.

Bruce Lee

School Administrator

### IN THE LIGHT OF A CHILD

*Within the darkness of the night*

*I long to be a light,*

*That seeds to be planted, small but glowing,*

*Seeds of brightness which start growing...*

*Soon darkness round me, empty, void of light,*

*God's Word resounds, and all things sparkle pure and clear and bright*

*Michael Hedley Burton*

# FROM FINANCE

**SCHOOL FEES ARE NOW OVER DUE - Term 2 Due Date: Friday, 10<sup>th</sup> May, 2019.**

CREDIT CARD/ONLINE PAYMENT	ELECTRONIC FUNDS TRANSFER	CHEQUE AND CASH
<p>Payments by Credit Card can be made by visiting the Bpoint website: <a href="https://www.bpoint.com.au">https://www.bpoint.com.au</a></p> <p><b>Biller Code: 147 2133</b> <b>Reference:</b> Family Code</p> <p>Phone payments can also be made by calling Reception on 9417 3638 during Office Hours.</p> <p>We accept VISA and MASTERCARD.</p>	<p>Payments by Electronic Funds Transfer (EFT) can be made to the school's banking details as follows:</p> <p>Account Name: Perth Waldorf School BSB: 066 000 Account Number: 1205 1015 Commonwealth Bank Perth</p> <p>Reference: <b>Family Code</b></p>	<p>Payments by cheque can be made payable to Perth Waldorf School. Please have a copy of your statement attached when mailing your cheque.</p> <p>Postal Address: PO Box 1247, Bibra Lake WA 6965</p> <p>Cheques and Cash Payments can also be made during office hours at the School Reception.</p> <p>EFTPOS terminal also available.</p>

**A late payment fee will apply to all accounts not paid by the due date. This does not apply if you have a payment plan arrangement in place.**

## **TERM 3 FEES**

Parents please note that Term 3 fees are being emailed out this week with a due date of the 2<sup>nd</sup> August.

To assist with timely delivery of your invoices, please add our email address **account@pws.wa.edu.au** to your safe sender list. If you need assistance with this, please contact reception. Thank you.

## GENERAL NEWS

### POSITIONS VACANT

Perth Waldorf School invites applications for...

#### **High School English and Humanities Teacher Part Time (0.55 FTE)**

*Commencing in Term 3, 2019*

We are seeking an enthusiastic teacher to join our wonderful team of teachers and commence with our High School students in Term 3, 2019. The teaching load is spread across 5 days, though classes would not commence before 10:30am. There is the potential for a future increase in the teaching load.

The successful applicants will have a passion for education, appropriate qualifications to teach English and HaSS and have a willingness to adopt the Steiner pedagogy and philosophy.

Applicants must be teachers who are registered (or eligible for registration) with the Teacher Registration Board and can meet West Australian child protection requirements. Support to sponsor a highly qualified Steiner teacher from overseas will be considered.

Written applications, including a CV, a one-page cover letter and three referees, should be marked 'Private & Confidential' and forwarded to:

The Administrator, Perth Waldorf School, PO Box 1247, BIBRA LAKE WA 6965, AUSTRALIA

Or Email: **employment@pws.wa.edu.au**

Applications close 4:00pm on Friday, 14<sup>th</sup> June.

For a conversation about this position, please phone Mark Phillips or Annabelle Kellenberger at the school  
(+618) 9417 3638

**HR and Compliance Officer 1.0 FTE**  
Commencing in July, 2019

We are looking for someone who is willing to go the extra mile and enjoys constantly improving their skills in working positively with a wide range of people. This role requires wise, efficient and high quality support to the School Administration Coordinator for non-educational aspects of the school's operations primarily in the areas of Human Resources, Non-Government school regulation, Policy and Compliance. The role as directed by, in collaboration with and reporting to the School Administration Coordinator includes but is not limited to the tasks of:

- Supporting the school in human resource management areas including employment conditions and entitlements, position management, recruitment, selection and termination, professional development, diversity and employee health and wellbeing;
- In consultation with the School Administration Coordinator, developing and managing school policies that align with the ethos, structure and practical functioning of the school;
- Supporting the School Administration Coordinator with non-government school registration standards, documentation, systems and other regulatory requirements;
- Supporting & effectively communicating with the Faculty Coordinators (Kindergarten, Primary and High School) across a range of non-educational, support infrastructure and staffing matters.
- Facilitate OH&S functions within the school.
- Supporting the efficient functioning of IT systems throughout the school in collaboration with the school's IT team.

**Selection Criteria:**

- Demonstrated high level reflective thinking, interpersonal skills and negotiation skills.
- Demonstrated high level oral and written communication skills.
- Demonstrated experience and an understanding of the nature of relationship building with all members of a school community.
- Demonstrated high-level human resource management skills, including the ability to develop and/or apply human resource management policies, practices and processes.
- Bachelor's Degree in Human Resources or a related field is highly desirable.
- Demonstrates an openness to the essential ethos of Steiner education at the heart of the school.

This position will be subject to a three month review and a six month probation period. The role is full-time, however consideration will be given to applicants who require flexibility around hours/days of work. Written applications, including a CV, a one-page cover letter and three referees, should be marked 'Private & Confidential' and forwarded to:

The Administrator, Perth Waldorf School,  
PO Box 1247, BIBRA LAKE WA 6965, AUSTRALIA  
Or Email: [employment@pws.wa.edu.au](mailto:employment@pws.wa.edu.au)  
Applications close 4:00pm on Friday 21<sup>st</sup> June, 2019.

For a conversation about this position,  
please phone School Administrator, Bruce Lee (+618) 9417 3638.

## Winter Festival THIS WEEK!

We invite all primary and high school students and parents to our Winter Festival this week on **Thursday, 20<sup>th</sup> June** (*kindergarten children will be attending their own Winter festival events, please read the details in last weeks' pabulum*). Please arrive at school **5.45pm onwards for a 6.00pm start**. Details for Primary and High School events are over the next page. We hope to see you all at this year's Winter celebration!

**See timetable over next page...**

# The WINTER FESTIVAL

Primary and High School

This Week - Thursday, 20<sup>th</sup> June

## REQUIREMENTS

- Arrive on time and well-prepared. Entry: via Front Gate. \*NB the festival attendance is very high, so please find parking at Adventure World, and allow plenty of time to walk to the classrooms after stopping in the plaza area to listen to music.
- Please dress to be warm.
- Please bring cups, spoons, etc. for soup.
- Hold a reverent mood for yourself and your child/ren.
- Switch off mobile phones. There will be official photographers on the evening.
- Parent helpers for before or after the festival - see Peter or Sarah for directions.
- Please feel free to bring your own lantern from home.

## PRIMARY TIMETABLE

5:45 pm (onwards)	Arrive and proceed through the main gate to be in classes by 6pm. Take soup to the field and place on the table labelled with your class if you are a soup maker
6:00pm sharp	<b>Class 7s</b> begin their lantern walk and spiral and return to classes for singing, stories etc. <b>Classes 6, 5 and 4</b> will start in classes and follow on from the 7s during the next hour. Your teacher will guide you through this process. <b>Classes 1, 2 and 3</b> will start in classrooms with sharing of stories and singing before embarking on their lantern and spiral walk, ending up at the bonfire for the lighting at 7:00pm. <b>Please note – parents of classes 1 &amp; 2 may walk with their child (1 parent, 1 child) remembering to walk behind your child when entering the spiral.</b> Parents from classes 3 -7 are to follow their class group through the Lantern and spiral walk.
7:00pm	To Large Oval for fire blessing, lighting of fire and singing <i>Rise up oh Flame</i> - followed by sharing of soup.
7.40 pm	Primary School Winter Festival ends (with <i>Goodnight To You All</i> song and lights up).

## HIGH SCHOOL TIMETABLE

The Winter Festival begins at **6:00pm** in their designated space. **Parents are asked join Sue Wallwork in Seekers Place for a Winter meditation and a separate group walk through the High School Spiral.**

5:45pm (onwards)	Arrive. Soup makers take soups to the Field and place on designated tables.
6:00pm (sharp)	Students go to designated festival space to begin. Parents go to Seekers.
7.00pm	All classes and parents to the Bonfire ready for Class 7s to light the fire.
7:05pm	Class 7 with class 12 proceed to bonfire, Fire blessing (Primary), High school verse, singing <i>Rise Up Oh Flame</i> , and the sharing of soup and bread.
7:40pm (approx)	Primary Winter Festival ends (with <i>Goodnight To You All</i> song and lights up).
7:45pm	Fire twirling, fire jumping revelry and winter solstice celebrations abound High School Festival ends at approx <b>8:30pm</b> .

PLEASE LEAVE PROMPTLY



# EARLY CHILDHOOD

## FROM THE COORDINATOR

### The Gift of the Light...

Winter Festival preparations are bearing fruit this week and we hope for the briskness in the air and the warmth of the firelight to nourish our community. Thanks to the care and hard work brought by teachers and parents to this time of year at our school.



### Visit From Dr. Lakshmi

Consultations with Lakshmi may be possible on Friday, 19<sup>th</sup> July. If you wish to register your interest, please leave your name and phone number with the school's reception.

Jennifer Byrne - Early Childhood Coordinator

## PRIMARY SCHOOL

### Connect Learning WA - Before and After School Care

Connect Learning are available for casual bookings all year round if you ever need last minute care. Feel free to pop in for a chat with Nicola (in the Extra Lesson Room before and after school).

**Before School Care** 6:30am to 8:25am

**After School Care** 2:00pm to 6:00pm

**Vacation Care** 6:30am to 6:00pm

**Early Finish Thursdays** 2:30pm to 6:00pm

**Pupil Free Days** 6:30am to 6:00pm

If you are interested in your child attending please email Nicola [Perthwaldorf@connectlearningafterschool.com.au](mailto:Perthwaldorf@connectlearningafterschool.com.au)

\*The service is only available to Primary aged children.\*

## PRIMARY CRAFT









# HIGH SCHOOL

## HIGH SCHOOL PYJAMA DAY

High School is doing a Pyjama day on 25th June. Gold Coin donation's to St Patrick's Men's shelter in Fremantle.



KEEP CALM




IT'S PYJAMA DAY

Blankets and Teddy bears are all welcome.

## CLASS 9 PLAY

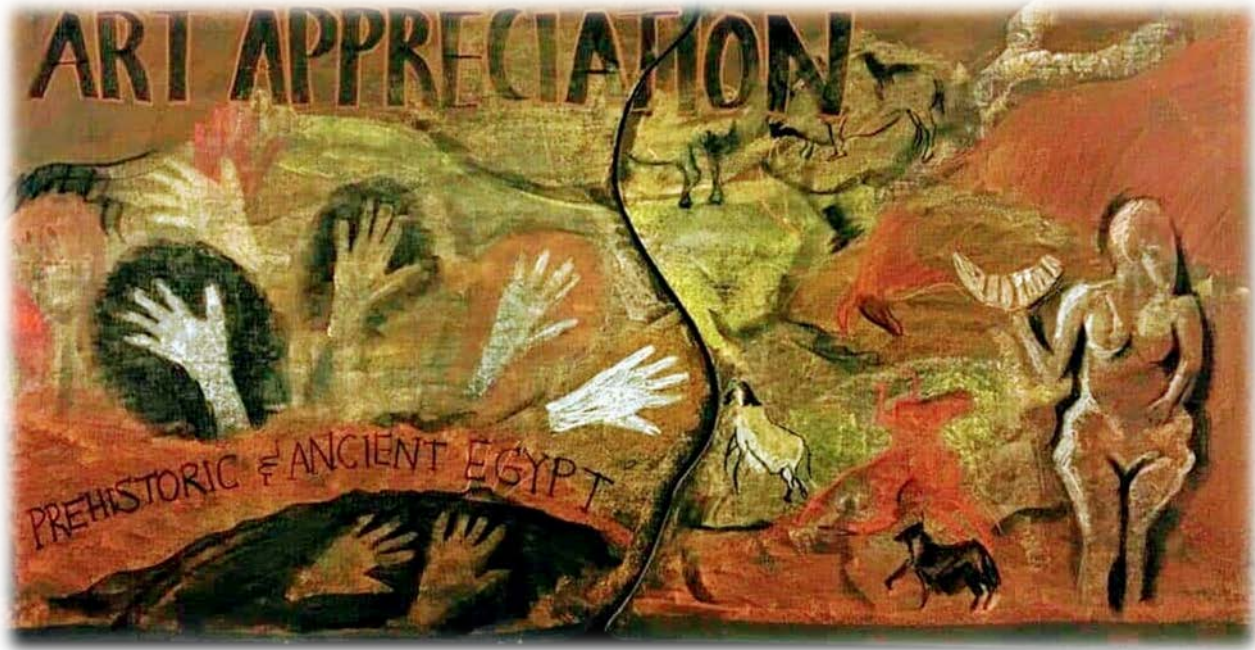
THIS GIRL laughs,  
THIS GIRL Cries,  
THIS GIRL does nothing

Three stylized head profiles facing left, each containing a different landscape. The first head has a purple and blue sky with a mountain range. The second head has a green forest with a river. The third head has a blue sky with a lighthouse on a small island.

**Cast 1**  
WEDNESDAY 26 JUNE @ 6:30PM & FRIDAY 28 JUNE @ 9AM

**Cast 2**  
THURSDAY 27 JUNE @ 9AM & FRIDAY 28 JUNE @ 6:30 PM

**Cast 3**  
THURSDAY 27 JUNE @ 6:30 PM & FRIDAY 28 JUNE @ 1 PM



## Examples from each graduating year and their chosen field of study

### 2011

**Jayden Bestel:** Mechanical Engineering – Curtin University  
**Phoebe Crotty:** Communication Design- RMIT  
**Hayley Parkes:** Social Worker –Curtin University  
**Patrick Zangerl:** Architectural Technology and Construction Management-CDST

### 2012

**Savita Ross:** Applied Fashion Design and Technology- Fashion and Design Institute  
**Jack Hall:** Instructor at DSR.  
**Charlie Maus:** Marine Science  
**Joseph Dennis:** Graphic design/Advertising Agency.  
**Zoe Street:** Anthropology, Sociology and Performance Studies- Curtin University

### 2013

**Anna McVey:** Interior Architecture.  
**Tashl Hall:** Youth Services, part time film making  
**Michael Blundell:** Teacher assistant  
**Zeb Bygott-Dwyer:** Carpentry- apprenticeship.  
**Christie McIlroy:** Fine Arts and History Curtin University.

### 2014

**Chris Maus:** Engineering- Murdoch University  
**Niall Morrow:** Health Sciences- Curtin University  
**Phillip Peterson:** Commerce- Curtin University  
**Maile Hefferon-Bowen:** Journalism and Sociology- Curtin University

### 2015

**Louis Beck:** Architecture-UWA  
**Abigail Clarke:** Commerce-Notre Dame  
**Gypsy-Rose Leithhead:** Law, Justice and Criminology Degree- ECU  
**Marcell Stiedl:** Dance- WAAPA

### 2016

**Amy Collins:** Psych and fine Art degree  
**Sebastian Lawrence:** Bio Medicine- Notre Dame  
**Maxine Matthys:** Marine Biology- Murdoch  
**Oscar Millar:** Acting, Directing and Writing- WAAPA  
**Mia Di Costa:** Nursing- Curtin University  
**Julian Uchiyama-Lee:** Physics and History- UWA

### 2017

**Brooke Hill:** Psychology at UWA.  
**Gabrielle Bailey:** Game Art/Design-Murdoch University

### 2018

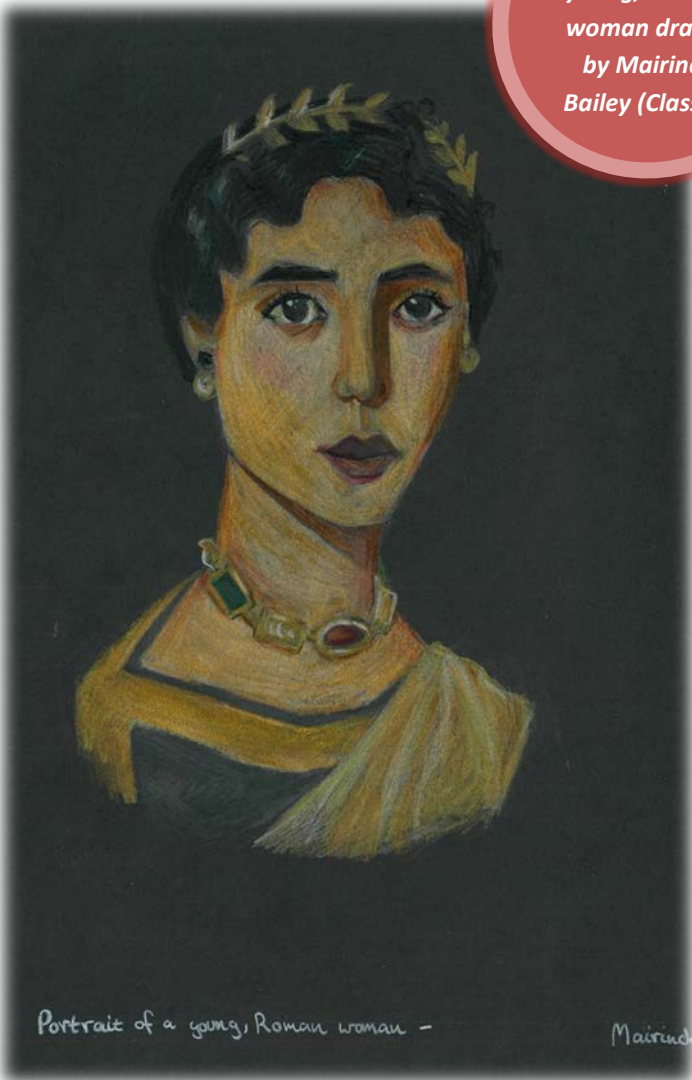
**Rome Featherstone:** Finance and Management- UWA  
**Isaac Duval:** Marine science-Murdoch University  
**Joseph Whitehorn:** Music-WAAPA  
**Caedon Kloosterman:** Computer Science- Murdoch University  
**Lachlan Armstrong:** Engineering- Murdoch University  
**Hugo Spiers:** Graphic Design-Curtin University  
**Sam Beck:** Biomedicine-Notre Dame  
**Bella Smith:** Art in Politics-UWA





*'Flower Creature'  
ink pen artwork  
by Molly  
Separovich-Cook  
(Class 12)*

*Portrait of a  
young, Roman  
woman drawn  
by Mairindi  
Bailey (Class 9)*



*Portrait of a young, Roman woman -*

*Mairindi*



*Pencil drawing  
of a wild horse  
by Eia Ballard  
(Class 11)*

# P & F

## 'THE CARRIAGE' SCHOOL SHOP



**OPENING TIMES:** Tuesday and Thursday from 8:15am-9:15am, and Wednesday from 2:30pm-3:30pm.

We stock all your school stationery supplies, uniforms and bags.  
We also have a large range of craft supplies, jewellery, knitted items, cleaning products, salt lamps, essential oil holders, amber teething necklaces, wooden toys and books.

## WOOLWORTHS EARN AND LEARN

It's that time again!! Woolworths Earn and Learn is back at Perth Waldorf School.

Woolworths Earn and Learn helps kids across Australia to get new equipment for their schools for subjects like science, technology, maths, arts, etc.

Collect stickers for every \$10 you spend at Woolworths, between now and the 25<sup>th</sup> June, and then bring your stickers to school to put in our collection boxes located outside the Front Office and the Carriage.

If you would like more information on how Woolworths Earn and Learn you can go to the link below:  
<https://www.woolworths.com.au/shop/discover/earn-and-learn>

Every sticker helps! Thank you.



## MAINTENANCE & GARDENING

We are a waste wise school!

We recycle what we use,  
separate things and you should too!

Glass, paper, plastic and tin,  
go in your RECYCLING BIN!

We must start now, we can't wait,  
quick or it will be too late!





# COMMUNITY CLASSES

## Groups/Classes

Participating in any of these activities goes towards Family Participation Hours.

*These groups for parents are run or led by teachers or parents. Members of the school community are encouraged to join any of the groups and enjoy the experience of personal growth and learning in this beautiful environment - a great inspiration for our children!*

Mondays, 9:00am-10:15am	<b>Parents and Friends Study Group</b> with Anne Williams (in the Library, no children please) <b>0424 771 217</b> .
Mondays, 10:30am-12:00pm (fortnightly)	<b>Biodynamic Group</b> with Heidi Halter (see below for details).
Tuesdays, 9:00am	<b>Craft Group</b> with Pixie Stott (outside the Canteen).
Tuesdays, 2:15pm-3:00pm	<b>Eurythmy</b> with Kristina Hamilton (in Williams Hall).
Wednesdays 9:00am	<b>Adult Singing</b> Come and join Claire Williamson and discover your inner voice (in the Music Office)
Thursdays, 9:00am-9:45am	<b>Listening Circle</b> with Bruce Lee - the Administrator (in the Library). Come in for a conversation, concern, query or just to listen.
Saturdays, 1:00pm-4:00pm	<b>Waldorf Wood Workers</b> with Christian Geyer (meet in Plaza) <b>0409 267 178</b> .

**BIODYNAMIC GROUP** - with Heidi Halter  
**Mondays (fortnightly), 10:30am-12:00pm.**

Please join us on Monday, 24<sup>th</sup> June for an introduction to composting. Meet in the Kindy 4 garden at 10:30am and then we will move off to the compost area. We will make a compost and notes will be given. A gold coin donation is appreciated. The compost area is not suitable for small children, our apologies. If you have any questions or arrive late please call Heidi on **0427 445 754**.

**FREE EURYTHMY CLASSES FOR ADULTS** - with Kristina Hamilton  
**Tuesdays, 2:15pm-3:00pm in Williams Hall.**

Eurythmy is great to do at any time of year, but it especially becomes a healing balm when winter approaches. As the outer cold increases, the inner life awakens, allowing a warm space for artistic impulses to be nurtured. The arts flourish in wintertime. Do come and join with others in this opportunity to feel whole and well. All welcome!



## SCHOOL NOTICES



School notices are strictly for members of the school only and may consist of: lost and found items, items for sale (student/school related), and classes/ lessons within the school, etc. Please restrict your notice to three lines (this is free of charge). School notices will appear in this section for two weeks. If you would like the ad to appear for longer, please contact the Pabulum on 9417 3638 each week. Thank you.

**LOST** - Grey jumper with hood. It has a large blue stripe across the front. Size 7 from Target. Name on the tags says "James". It was lost on Monday, 3<sup>rd</sup> June. Last seen at High School Playground.

**COT MATTRESSES NEEDED** - We are looking for 3 inner sprung cot mattresses for the Class 9 play. They can be in almost any condition. Please call Anna on **0402 136 350** if you can help. Thanks.

**PIANO TEACHER WANTED** - for 2 PWS Primary School students, after school at their house or happy to travel nearby. Please contact Vic on **0402 378 018**.

**PLANETBOX** - lost Planetbox lunchbox with blue cover, on the grass in front of the Adventure Playground. Please call Karen on **0415 700 975**, or give to Tayan in Class 4.

**CAR POOLING** - I'm looking for someone who would like to do car pooling with me from Kwinana / Rockingham area. Please contact Carola **0402 598 896**.

## **Inviting new enrolments for a modified course Running over 3 days instead of 5!!**

Module One and Two in the Teacher Development Course  
Dr. Lakshmi Prasanna and Patries Orange

In an inspired and creative flourish, and in close consultation with Patries and Lakshmi, we have together modified the course and consequently the price as well. This has led to a happy arrangement that means a slightly shorter course which may well appeal to those unable to commit to a full five days.

**Monday 15<sup>th</sup> July 6-8pm,  
Tuesday, Wednesday and Thursday, 16-18<sup>th</sup> July. 8.30-4.30pm  
Cost: \$485**

For more information or to book contact Jenny Hill  
jennyhill@iinet.net.au 0432 735 744



Silver Tree Steiner School  
Invites applications for the position of:  
**Class 1 Teacher**

A vacancy exists for a Class One teacher from the commencement of Term 1, 2020 and we invite a suitable applicant for this ongoing position. Silver Tree is a caring, vibrant and growing school with an emphasis on developing the whole child through the head, heart and hands using the ACARA approved Australian Steiner Curriculum. The School has 200+ students and approximately 40 enthusiastic staff from pre- Kindergarten to Class 6 and is located on 25 acres of semi-rural land in the peaceful natural bush area of Parkerville, in the Perth Hills WA.

### **DESIRED CRITERIA**

The successful applicant will:

- Be eligible for WA Teacher Registration
- Be a passionate and motivated teacher with a high degree of professionalism and a diverse set of skills to deliver the broad-based Steiner curriculum
- Have successful previous teaching experience in a Steiner school and a deep interest and practical understanding of Steiner pedagogy and philosophy
- Have demonstrated ability to work supportively and collaboratively as part of an enthusiastic and committed primary team
- Have a commitment to further personal and professional learning
- Have a preparedness to be fully involved in the Schools' activities

Applicants are required to submit a Letter of Application addressing the essentials of the Position Statement and Resume, including the names and contact numbers of three referees, one of whom must be the current employer if applicable. Applicants must have current registration as a teacher with the Teacher's Registration Board of WA and are required to submit their registration details along with a copy of their Working with Children Check.

The Position Statement can be found on the school's website: [www.silvertree.wa.edu.au](http://www.silvertree.wa.edu.au)

Applications close Monday, 15<sup>th</sup> July 2019 at 9.00am.

Applications should be addressed to the Head of School, marked 'Confidential' and emailed to: [anna.brindal@silvertree.wa.edu.au](mailto:anna.brindal@silvertree.wa.edu.au)

Phone: Anna Brindal - (08) 9295 4787 for enquiries.



## Rudolf Steiner College Perth

### TERM THREE

**A Journey of Becoming**  
Patries Orange and Lakshmi Prasanna  
PWS

**July**  
15th - 19th  
Monday evening -  
Thursday afternoon

**Biography Module One: Life Mapping**  
Dale Irving  
Silver Tree Steiner School

**July/August**  
27th, 3rd  
2 Saturdays

**Biography Module Two: Freedom of Fate**  
Dale Irving  
Silver Tree

**August**  
17th, 24th  
2 Saturdays

**Play**  
Renate Breipohl  
Silver Tree

**September**  
Saturday 7th

**Child Observation**  
Renate Breipohl  
PWS

**September**  
Saturday 14th

**The Four Temperaments**  
Jill Whitfield and Sharon Clifford  
PWS

**August/September**  
22nd, 29th, 5th, 12th  
Thursday evenings

**Goethean Studies**  
Horst Hellman

**September**  
21st, 22nd  
details to be confirmed



Rudolf Steiner College Perth

## Lyre Making Workshop

### Tutors:

Judy Gray and Titus Witsenberg

**One place left!!**

### When

4 Saturdays. 9 - 12  
October 19th and 26th  
November 9th and 16th

### Where

Perth Waldorf School, Gwilliam  
Drive, Bibra Lake

### Cost

\$350

### Information Booking

Titus Witsenberg  
Jenny Hill [jennyhill@inet.net.au](mailto:jennyhill@inet.net.au)

<http://www.rudolfsteinercollege.com.au>



## COMMUNITY NOTICES



Community Notices are for members of the school's community only and may consist of; business adverts, producers, services, items for sale (non-school related), etc. keeping in mind that they need to be consistent within our schools' ethos. Please restrict your notice to three lines (this is free of charge). All Community Notices will appear in this section for two weeks only. If you would like a 1/4 page advert, a \$10 fee is required and will only appear in Week 2 and Week 8.

**ESSENTIAL OIL INFO SESSIONS** - Free 20 minute information sessions how essential oils can benefit your life, by a company that owns more farms than any other in the world. Phone April **0413 159 815**.

**WILD, WISE & WORTHY GIRLS' CIRCLES** - invite girls aged 9-11 years old to 'Queen of her Kingdom', a circle exploring body sovereignty, image and health. Sunday 23<sup>rd</sup> June 10.00am - 1.00pm Bibra Lake. Check out [www.facebook.com/girlscircles](https://www.facebook.com/girlscircles) for more info, or call Karen **0404 044 999**.

## 25% OFF YOUR FIRST VISIT\*

*Nourish your senses with a flowing fluid, bespoke and integrated bodywork experience*

TOUCH ALCHEMY  
ESALEN MASSAGE AND BODYWORK

Agnes de Souza

fb: [@touch.alchemy.with.heart](https://www.facebook.com/touch.alchemy.with.heart)

0405095088

\* mention this  
ad when  
booking





Peaceful rally to Stop 5G. Family/Child friendly rally. Wear red. Fill up your cars with friends and family, carpool, take public transport.

SAT, 22 JUN AT 13:30  
**STOP 5G RALLY PERTH**  
Supreme Court Gardens

Supporting ourselves,  
kids and planet for a  
healthier Future.  
Make your feet count.

PERTH  
WALDORF

Learn  
to Skate



cockburn  
**ice arena**

**\$220**

~~was \$279~~



**ALL LEVELS  
WELCOME**

- **10 WEEKS OF LESSONS**
  - **FREE ENTRY TO PUBLIC SESSIONS**
- 22 JULY - 30 SEPTEMBER**  
LESSON TIME: 2:45 - 3:15pm  
LESSON DATES: 25 July, 1, 8, 15, 22,  
29 August, 5, 12, 19, 26 September

**p (08) 9411 0309**

**FOR ENROLMENT INFO EMAIL  
NADINE@COCKBURNICEARENA.COM.AU**



# FREMANTLE PICTURE FRAMERS

155 GEORGE STREET  
EAST FREMANTLE

**25% OFF**  
**School Discount**  
**for all Steiner**  
**Families!**

By appointment only

Contact Cameron Coutts

0413 443 375

fremantleframers@gmail.com

www.fremantleframers.com

## REIKI COURSES, ENERGY HEALING, LIFE COACHING, EFT



&THRIVING with Helen Airey  
INSPIRING A VIBRANT LIFE  
helenairey.com

- Reiki Courses: Levels 1, 2 or Master.  
1-to-1 and small private groups available at your home or in East Fremantle
- Energy Healing: Aura Cleansing, Chakra Balancing, Reiki  
Treatments available at your home, in East Fremantle or Distant  
Special Price for School parents: \$75 for 1 hour 15 mins.
- Coaching: Various options available to suit your requirements and budget.  
Please call for a chat to see how I can support you.

**Call Helen : 0430 355 304 or email : helen@helenairey.com**

Reiki Master ~ Transformation Specialist ~ Tapping Into Wealth & LOA Coach ~ EFT Practitioner

Need a Ceremony or help with one?

Registered Marriage, Funeral Celebrant, Death Walker and Reiki Master.  
For Rites of Passage from Womb to Heaven.

Contact **Penny Champ** (PWS Librarian/Class 12 Project Coordinator) on:

**0414 654 212 or**  
**penelopechamp@gmail.com**

Happy also to give advice if you wish to create your own ceremony.



# PIXIE STOTT CANTEEN

Canteen Open times:

**Mon and Fri, 8:10am-2:00pm.**

**Tues and Wed 8:10am-2:00pm. After school 3:00pm-3:15pm.**

**Thurs 8:10am-1:30pm. After school 2:10pm-2:30pm.**

## Menu for Term 2

All Primary school students must order before school for morning tea and lunch.

### Daily specials (must be ordered):

<b>Monday -</b>	Pasta with hearty vegetable sauce ( <b>vegan</b> available)	\$5.00
	Pasta with beef bolognese sauce	\$5.00
<b>Tuesday -</b>	Chicken and vegetable pie, vegetable pie, chicken korma pie, or chunky beef and vegetable pie.	\$5.00
<b>Wednesday -</b>	Vegetable chilli served with rice, corn chips, natural yoghurt and cheese ( <b>GF</b> ) ( <b>vegan</b> available).	\$5.00
<b>Thursday -</b>	Vegetarian Fried Rice ( <b>GF</b> ) ( <b>vegan</b> available) add egg <b>50c</b> add ham <b>50c</b>	\$4.50
<b>Friday -</b>	Beef burger with salad ( <b>GF</b> available) or tempeh burger with salad ( <b>vegan</b> )( <b>GF</b> available).	\$6.00

### Available everyday (items with a ★ must be ordered):

#### Savoury:

Soup (all soups are gluten free without croutons).

★Toasted chicken, spinach, sundried tomato and cheese wrap.

Half \$4.00 / Whole \$6.00

★Toasted spinach, sundried tomato and cheese wrap.

Half \$3.50 / Whole \$5.00

★Beef sausage in wholemeal bread.

\$2.50

Spinach and ricotta rolls.

\$4.50

Cheese and tomato toasties.

\$2.50

★Gluten free

\$3.00

★Ham, cheese and tomato toasted sandwiches.

\$3.50

★Gluten free

\$4.50

★Pizza - vegetable or meat.

\$3.00

Boiled egg.

\$1.00

Popcorn (**GF**) (**vegan**).

50c

#### Sweet:

Cakes (assorted variety).

Bliss balls.

\$3.00

Cookies.

from

\$1.00

Dried fruit and nut pack (**GF**) (**vegan**).

\$1.00

Fresh fruit.

from

50c

Icy Poles (**primary only after school**).

\$1.50

#### Drinks:

Kombucha (**high school only**)

\$4.00

Flavoured Bannister Downs pouches (**primary only after school**).

\$2.50

Slushies' (**primary only after school**).

Sm \$2.50 / Lg \$4.00

Juices.

Sm \$2.50 / Lg \$3.50

Coconut water.

Sm \$2.50 / Lg \$4.00

Fresh coconuts (when available).

\$4.50

Plain Milk.

Sm \$1.50 / Lg \$2.50

Hot Chocolate.

Sm \$3.00 / Mug \$3.50 / Take away \$4.50

Coffee.

Mug \$3.50 / Take away \$4.50

Long Black.

Mug \$3.00 / Take away \$4.00

Tea.

Mug \$2.00 / Take away \$3.00

Herbal Tea.

Mug \$2.50 / Take away \$3.50

\*Almond or coconut milk extra \$1.00.

**Bring your own take away cup for 50c discount!**